

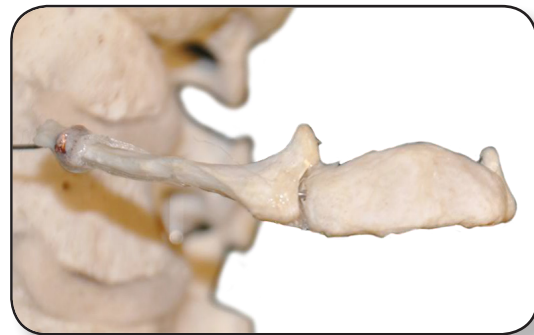
# Anatomy Pathways™ for VH Dissector™

## Axial Skeleton – Facial Bones



Identify the following structures in the images below.  
(Some structures may be visible in more than one image.)

orbits • frontal bone • ethmoid • palatine bones • lacrimal bones • maxilla  
inferior nasal conchae • zygomatic bones • mandible • alveolar processes  
infraorbital foramen • hyoid bone • body of hyoid • alveoli • nasal bones • sphenoid  
lesser horns (cornu) • greater horns (cornu) • palatine process  
lacrimal sac • lacrimal fossa



What is the function of the *palatine process* and where is it?

---

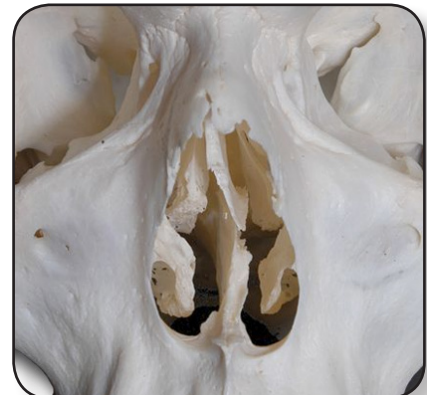
---



# Axial Skeleton – Facial Bones

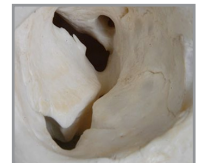
Identify the following structures in the images below.  
(Some structures may be visible in more than one image.)

body of mandible • ramus of maxilla • angle • coronoid process  
condylar process • mental foramen • mandibular foramen • nasal septum • vomer  
perpendicular plate • hyaline septal cartilage • temporomandibular joint



What bones form the *temporomandibular joint*?

1. \_\_\_\_\_
2. \_\_\_\_\_



What is the function of the *hyaline septal cartilage*?

\_\_\_\_\_  
\_\_\_\_\_

