

Anatomy Pathways™ for VH Dissector™

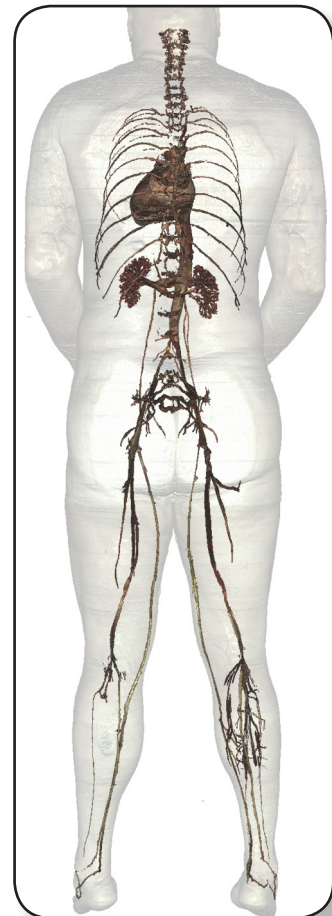
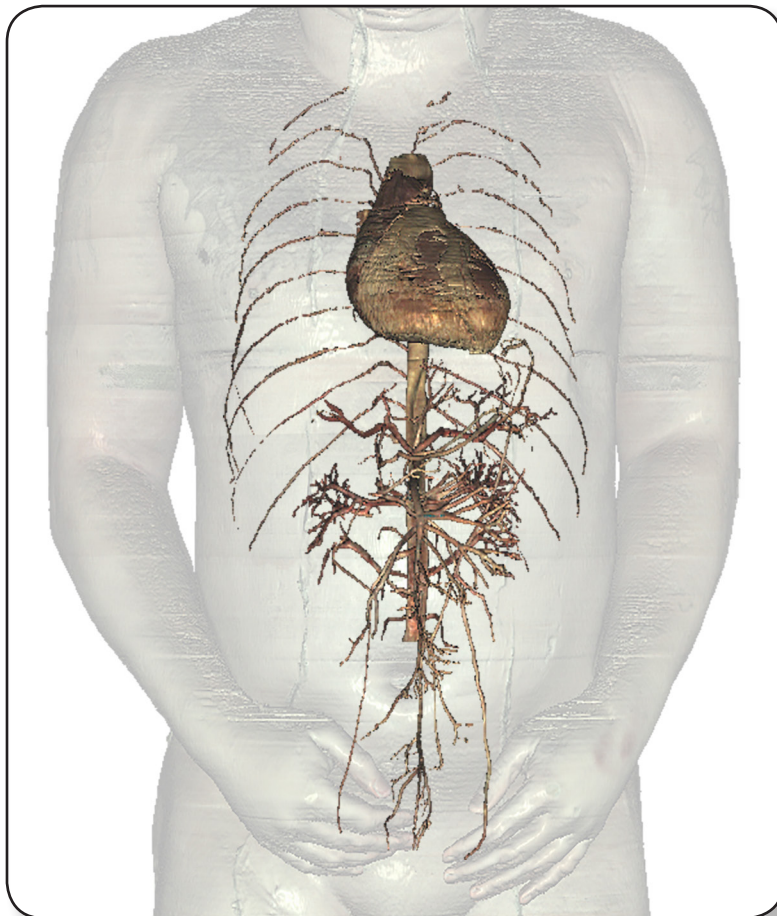
Thoracic Abdominal Vasculature



Identify the following structures in the images below.

(Some structures may be visible in more than one image.)

aortic arch • thoracic aorta • posterior intercostal arteries • abdominal aorta
celiac trunk • left gastric artery • splenic artery • common hepatic artery
superior mesenteric artery • inferior mesenteric artery • renal arteries
internal iliac veins • external iliac veins • common iliac veins • inferior vena cava
renal veins • suprarenal veins • hemi-azygos vein • azygos vein



What is the function of *visceral and parietal arteries* branching from the thoracic aorta?

Thoracic/Abdominal Vasculature

Identify the following structures in the images below.
(Some structures may be visible in more than one image.)

testicular arteries • ovarian arteries • testicular veins • ovarian veins • splenic vein
superior mesenteric vein • inferior mesenteric vein • gastric vein
hepatic portal vein • hepatic vein



What is the function of the accessory *hemiazygos vein*?
