

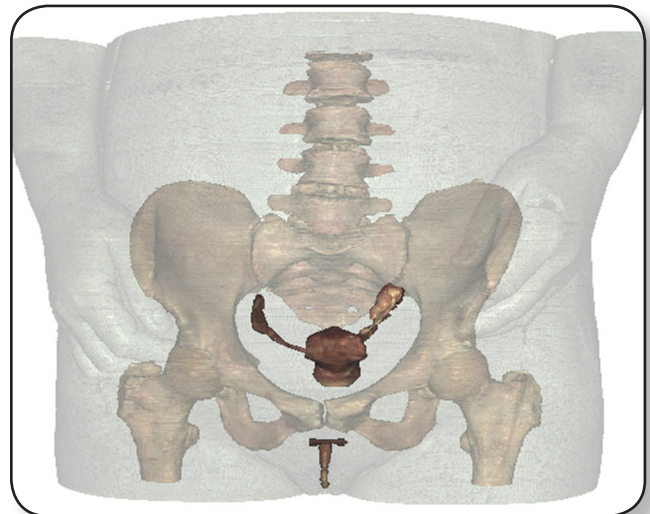
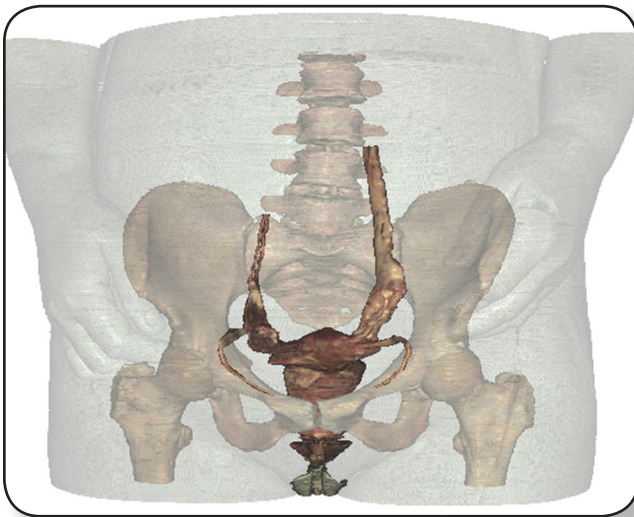
Anatomy Pathways™ for VH Dissector™

Reproductive System



Identify the following structures in the images below.
(Some structures may be visible in more than one image.)

suspensory ligament • broad ligament • ligament of the ovary • ovary
uterine tubes • fimbria • uterus • round ligament • vagina
vestibule of vulva • fascia of clitoris • labia majus • labia minus • cervix



Reproductive System

Identify the following structures in the images below.
(Some structures may be visible in more than one image.)

testis • epididymis • ductus deferens • spermatic cord
seminal vesicles • prostate • ejaculatory duct • urethra
corpora cavernosa • corpus spongiosum • glans penis • bulb of the penis



What is the function of the *bulbourethral glands*?

What is the “*root of the penis*?”
